



22956 Highway 61 Morley, MO 63767 Phone: (573) 262-3545 Fax: (573) 262-3369

Owners Manual

NEW YORK DUAL AUGER SPREADER MANUAL 2016





22956 Highway 61 Morley, MO 63767 Phone: (573) 262-3545 Fax: (573) 262-3369

TABLE OF CONTENTS

<u>DESCRIPTION</u>	<u>PAGE NUMBER</u>
Limited Warranty	4
Warranty Request Procedure	5
Periodic Maintenance Inspection	6
Safety Decal Information	7
Operating Instructions	8
Recommended Maintenance	9
Hydraulic Trouble-Shooting Chart	10
Notes	11
Auger Spreader Safety Decal Layout Sheet	12
Auger Spreader Safety Decal Layout Parts List	13
152-82-60 Dual Auger Spreader Assembly Drawing	14
152 -82-60 Dual Auger Spreader Assembly Parts List	15
120-82-54 Dual Auger Spreader Assembly Drawing	16



22956 Highway 61 Morley, MO 63767 Phone: (573) 262-3545 Fax: (573) 262-3369

DESCRIPTION

PAGE NUMBER

120-82-54 Dual Auger Spreader Assembly Parts List	17
Auger Spreader Pivotal Rear Chute Assembly Drawing	18
Auger Spreader Pivotal Rear Chute Assembly Parts List	19



22956 Highway 61 Morley, MO 63767 Phone: (573) 262-3545 Fax: (573) 262-3369

***** LIMITED WARRANTY *****

Viking - Cives Midwest, Inc. warrants products of its manufacture against defects in workmanship and material for a period of one year from date of shipment to customer; and in consequence of this warranty, any component part or parts of such products proving defective within the above specified time will be repaired or replaced F.O.B. factory, providing such parts are returned, transportation prepaid, to the factory and found defective by **Viking - Cives Midwest, Inc.** This warranty will not apply to any product which shall have been repaired or altered outside of the **Viking - Cives Midwest, Inc.** factory in any way so as, in **Viking - Cives Midwest, Inc.** sole judgment, to affect its stability or reliability, nor which has been subjected to misuse, negligence or accident.

The obligations of **Viking - Cives Midwest, Inc.** under this limited warranty are limited to the replacement of defective parts as set forth above; such obligations are exclusive and in lieu of all other remedies, warranties, guarantees or liabilities, express or implied, with respect to each product delivered hereunder, arising by law or otherwise (including without limitation any obligation or liability of **Viking - Cives Midwest, Inc.**, arising from negligence or with respect to fitness for a particular purpose, merchantability, loss or use, revenue or profit, or any incidental, indirect, special or consequential damages or injuries; and all other remedies, warranties, guarantees, or liabilities are hereby expressly excluded and disclaimed. This limited warranty shall not be extended, altered, or varied except by a written instrument signed by **Viking - Cives Midwest, Inc.**

Viking - Cives Midwest, Inc. assumes no responsibility for engines, electrical equipment, or any other equipment and accessories not manufactured by **Viking - Cives Midwest, Inc.**

REGISTRATION OF EQUIPMENT AND WARRANTY INFORMATION

Before using equipment check for damage. Report any damage to equipment at once to Viking-Cives Midwest, Inc. The warranty period becomes effective upon date of delivery of equipment unless other arrangements have been made with a Viking-Cives Midwest, Inc. distributor or Viking-Cives Midwest, Inc. The information required to register the equipment may be found on the serial number tag secured to the equipment.

ORDERING PARTS

Delays and errors can be eliminated when ordering instructions are followed correctly.

1. Place orders direct with Viking - Cives Midwest, Inc. / nearest dealer.
2. State Company name, address, and postal zip code.
3. Give the exact model and serial number of the equipment/unit (stamped on the unit identification plate.)
4. Furnish part number, description and quantities required. *Note: An alpha designation in the Item ID column indicates a sub-component for that parent item. When placing parts orders reference the parent item to receive a complete assembly. Individual items can be ordered separately if required by ordering the alpha designated item number.*
5. Print or type order clearly. **Note: A purchase order is required for the warranty parts.**
6. Give specific shipping instructions.

VIKING - CIVES MIDWEST, INC. – 22956 Hwy 61 Morley, MO 63767
(573) 262-3545 Phone; (573) 262-3369 Fax



22956 Highway 61 Morley, MO 63767 Phone: (573) 262-3545 Fax: (573) 262-3369

WARRANTY REQUEST PROCEDURE

All repairs considered for warranty that are performed outside of Viking - Cives Midwest, Inc.; require prior written authorization from Viking - Cives Midwest, Inc. Failure to obtain written warranty authorization prior to repairs may result in the rejection of the warranty claim. To obtain warranty consideration one must provide Viking - Cives Midwest, Inc. with all required unit information including date of manufacture and serial numbers. In most cases this information is easily obtained from the "Shipped Unit Tag" (located in most cases inside the driver's side door) and/or individual unit serial tag.

(A) To obtain Parts Warranty Consideration:

- (1) Contact Viking - Cives Midwest, Inc. customer service to obtain a Return Goods Authorization (RGA) number. Any product arriving at Viking - Cives Midwest, Inc. without a RGA number will be rejected and returned to the sender at his or her own expense.
- (2) Goods are to be shipped prepaid to Viking - Cives Midwest, Inc. 22956 Highway 61 Morley, MO 63767. **All items should be clearly marked with the appropriate RGA number.**
- (3) When a replacement item is shipped to replace a defective part for warranty consideration the following additional steps will occur:
 - a) A Purchase order must be received for the replacement parts.
 - b) An invoice will be generated for the value of the replacement item(s).
 - c) The defective part(s) must be returned (prepaid) to Viking - Cives Midwest, Inc.
 - d) Upon receiving the defective part(s) Viking - Cives Midwest, Inc. will issue and process a Discrepant Material Report (DMR). Once the evaluation of the DMR report is complete and the parts are deemed warranty, a credit will be issued against the outstanding invoice. **If the part(s) are deemed Non-warranty the invoice will remain outstanding to be paid to Viking - Cives Midwest, Inc.** Any part(s) to be returned to the customer will be at his or her own expense.

(B) To obtain Labor Parts Repair Warranty Consideration:

In the event that repairs are required outside of Viking - Cives Midwest, Inc. facility that may be considered for warranty the following steps must occur. **Notification of Viking - Cives Midwest, Inc. customer service must take place prior to the start of any repairs.**

- (1) Contact Viking - Cives Midwest, Inc. customer service to obtain a Warranty Claim Form (WCF) and warranty authorization number.
- (2) Fill out all required WCF information and fax or mail the completed form to Viking - Cives Midwest, Inc., attention Customer Service Department.
- (3) Once the WCF report has been reviewed warranty authorization will be granted or denied. **NOTE: Viking - Cives Midwest, Inc. warranty labor rates will apply unless specifically determined otherwise.** Any part(s) involved in a WCF request must follow the Parts Warranty Consideration procedures.

For Customer Service and/or Parts requests please contact:

Parts Department – DeWayne Stroder (573) 262-3545; (573) 262-3369 fax
Service Department – Ralph Parker (573) 318-0755



22956 Highway 61 Morley, MO 63767 Phone: (573) 262-3545 Fax: (573) 262-3369

PERIODIC MAINTENANCE INSPECTION
DAILY INSPECTION AND LUBRICATION

Daily inspection along with periodic preventive maintenance will reduce the chance of any major repairs and down time during equipment use.

1. Check the fluid level in the hydraulic oil reservoir. If the sight indicated low oil level, add the appropriate amount of the specified hydraulic fluid. **Cold Weather Operation:** All equipment is designed to operate with hydraulic oil minimally warm. During cold weather conditions, it is recommended that the truck be run at idle with the pump engaged and circulating the oil through the system before operating equipment.
2. Check all components for loose and/or missing fasteners, if required tighten and/or replace.
3. Visually inspect all battery terminals and electrical connections, wires, switches, etc. for signs of corrosion, wear, loose and/or broken connections, etc. At the beginning of each shift review all lighting accessories to ensure proper working conditions, immediately replace any broken or non-functioning bulbs and/or lenses.
4. Visually inspect all hydraulic connections and hoses for cracks and/or leaks. Rupturing hoses may produce a high-pressure stream of hot hydraulic oil.
5. Check all cables and chains for excessive wear or damage.
6. Visually inspect plow units. Check cutting edges. If cutting edge has excessive wear remove and rotate, or if required, replace. **CAUTION:** Do not allow cutting edge to wear down to mounting angle. Any wear to the mounting angle may affect the operation and safety of the equipment. Replacement is costly.
7. At the beginning of each shift visually inspect all caution and warning decals. All decals should be complete and legible. If decals are not legible, clean them. If cleaning the decals does not make them legible, install new decals.

A WORD ABOUT SAFETY

The equipment described in this manual is normally being operated in winter conditions with bad weather and snow & ice conditions. Due to these adverse operating conditions it is important that you the operator use good safety practices at all times to protect yourself, co-workers, and others when using the equipment.

It is not practical or possible to warn you about all the hazards associated with the operation and maintenance of this equipment. You use your own good judgment supplemented with the information found on the safety decals, instructions in this manual, your employer's safety programs, safety codes, local, state/provincial, and federal laws, rules and regulations.

When operating/performing maintenance on this equipment, trouble shooting equipment operations and loading or unloading the sanders/spreaders with material observe and obey all safety decals on the equipment and warnings listed in the manual. Failure to do this could result in serious injury or death to you or others.

Remember at all times that as the operator you are responsible for the safe operation of this equipment and responsible for the safety of others. Good safety practices not only protect you but also protect the people around you.

SAFETY DECAL SHEET



SAFETY ALERT SYMBOL

THIS SYMBOL MEANS **ATTENTION!**
BECOME ALERT!
YOUR SAFETY IS INVOLVED!

PLEASE READ AND UNDERSTAND ALL SAFETY AND MAINTENANCE INSTRUCTIONS COMPLETELY BEFORE CONTINUING FURTHER!

SAFE EQUIPMENT INSTALLERS and OPERATORS:



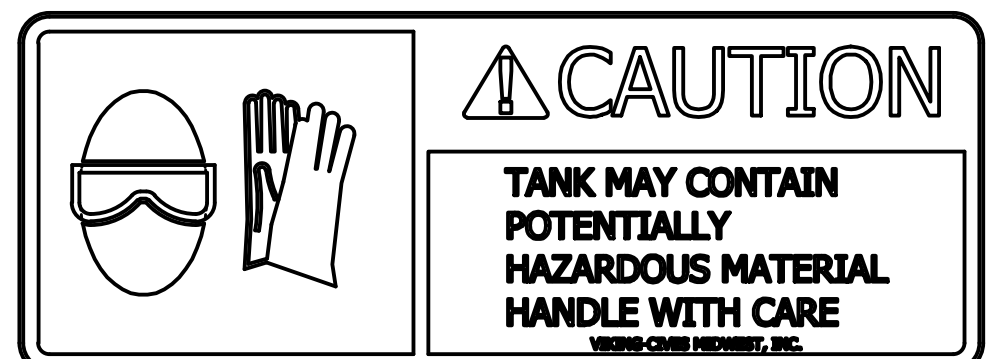
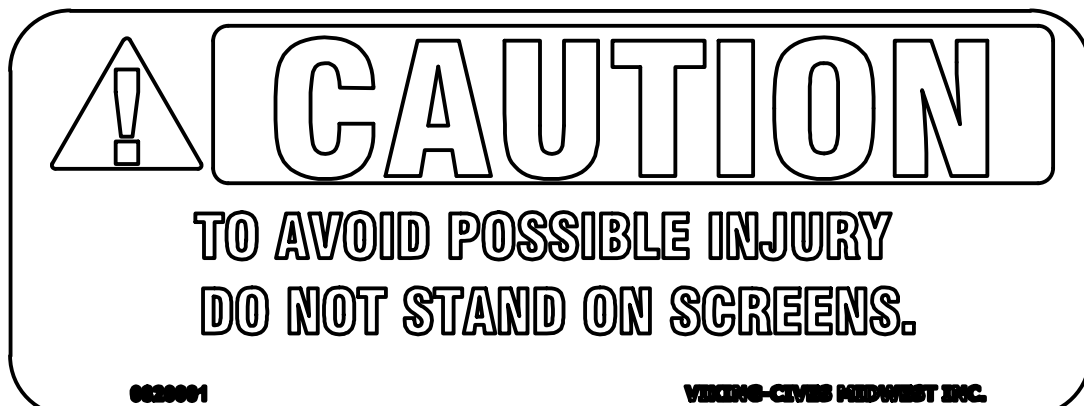
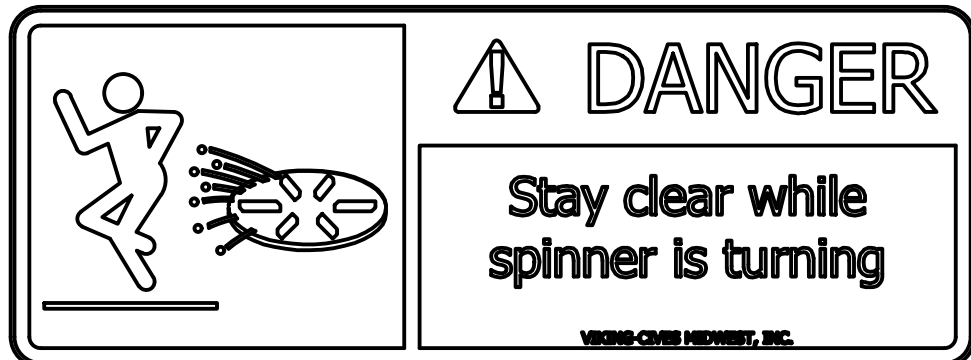
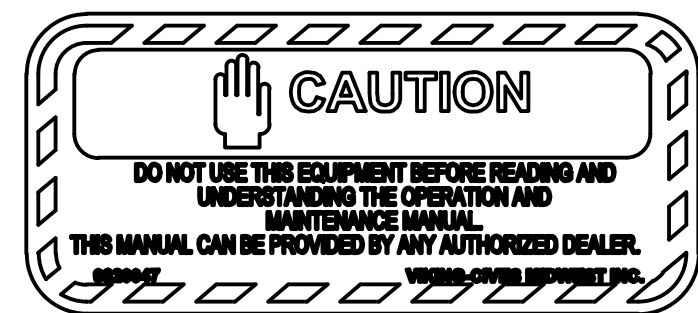
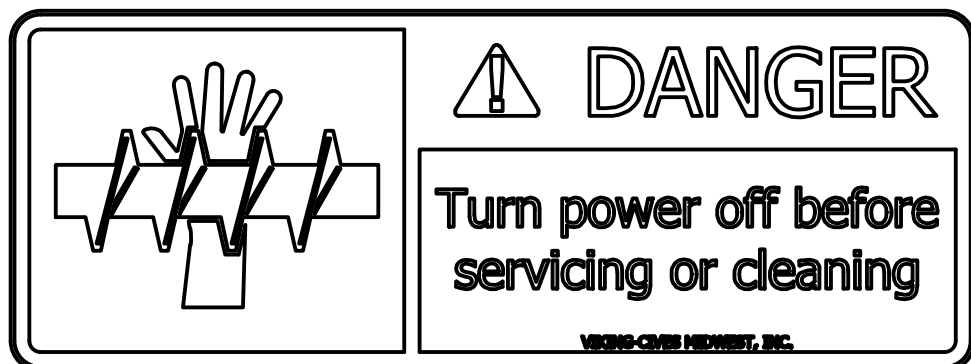
TURN OFF ALL POWER BEFORE PERFORMING ANY SERVICE OPERATIONS

FOLLOW RECOMMENDED OPERATING PROCEDURES.

KEEP EQUIPMENT IN SAFE OPERATING CONDITION AT ALL TIMES.

RECOGNIZE AND AVOID HAZARDS WHILE OPERATING, SERVICING AND MAINTAINING EQUIPMENT.

THE BEST SAFETY DEVICE IS A CAREFUL OPERATOR!



OPERATING INSTRUCTIONS FOR V-BOX SPREADERS

CAUTION

1. When starting up new equipment, be sure everyone is standing clear, watching for anything that may require shutting down the system.
2. Be sure lever on valve is moved completely to "OFF" position before working in or around spreading equipment.
3. Recommended material is 1/2" screened size or less for standard chain (auger will allow to move larger material).

INITIAL START UP

1. Fill reservoir about three-fourths full with high grade nonfoaming hydraulic oil.
KEEP OIL CLEAN!
2. Move valve ON-OFF lever to "OFF" position.
3. Open auger and spinner knobs on valve.
4. Engage PTO and allow hydraulic oil to circulate several minutes to warm up.
5. Move ON-OFF lever to "ON" position.
6. Check entire hydraulic system for leaks.
7. Examine auger and spinner to see if they are running in correct direction.
8. Refill reservoir to three-fourths full.
9. Hydraulic system is ready for use.

SPREADER OPERATION

1. Start truck engine and allow hydraulic system to warm up by shutting off spinner and auger knobs and moving ON-OFF lever to "ON" position.
2. Turning the knob marked "SPINNER" counter clockwise will increase the spinner speed and thus the amount of material to be spread.
3. Turning the knob marked "AUGER" counter clockwise will increase the auger speed and thus the amount of material to be spread.
4. The gate on the rear of the box will also allow more material to pass to the spinner when opened wider.
5. The adjustment chains on the side of the drop chute adjust the direction of the spread pattern. The longer the chain is the more the material will hit the front of spinner disk. The shorter the chain is the more material will hit the rear of the spinner disk. A little experamenting with different positions and spinner speed will show the pattern spread as desired for direction and width.
6. The control valve may be turned on and off or adjusted while truck is in motion.
7. Spinner and auger may be stopped at the same time without changing their valve settings by moving the ON-OFF lever to "OFF" position.

RECOMMENDED MAINTENANCE FOR MATERIAL SPREADERS

CAUTION

1. Always replace shields and covers when maintenance is complete.

MAINTENANCE FOR ALL MATERIAL SPREADERS

1. Allow hydraulic system to warm up before using.
2. Maintain a three-fourths full reservoir using high grade nonfoaming hydraulic oil.
3. Avoid getting contaminants in reservoir when filling.
4. Replace filter cartridge (1090492) with new cartridge at least twice a year and more often if necessary.
5. Clean quick disconnects before taking apart or connecting.
6. Protect quick disconnects while in use and after taking apart with oily rag or other suitable protection.
7. All bearings require periodic greasing, and more frequent greasing during periods of greater use.
8. Greasing pump shaft U-Joints and slip-end of slip U-Joints is recommended with each truck lubrication.
9. Drive augers should be checked frequently and cleaned to show any damage that has encoured during use and then fixed.
10. Oiling or greasing spinner hinge rod (if on spreader) is suggested.
11. Hydraulic motors and gear reducers should be checked regularly for leaks or other damage.
12. Hosing down and cleaning spreader after each use, and oiling each season before being stored will greatly prolong life of spreader.
13. Spreader trough or hopper should be kept empty to prevent material from freezing around trough and augers in server cold weather.

HYDRAULIC TROUBLE-SHOOTING CHART

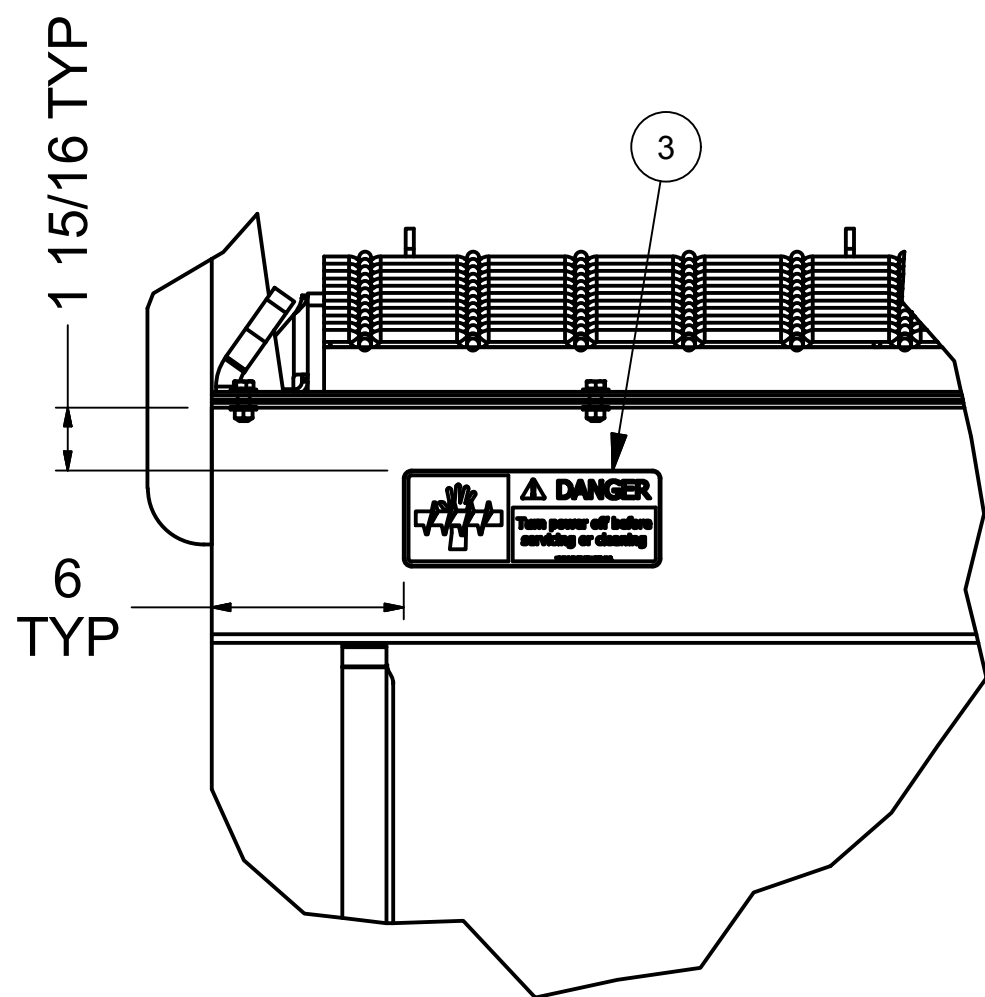
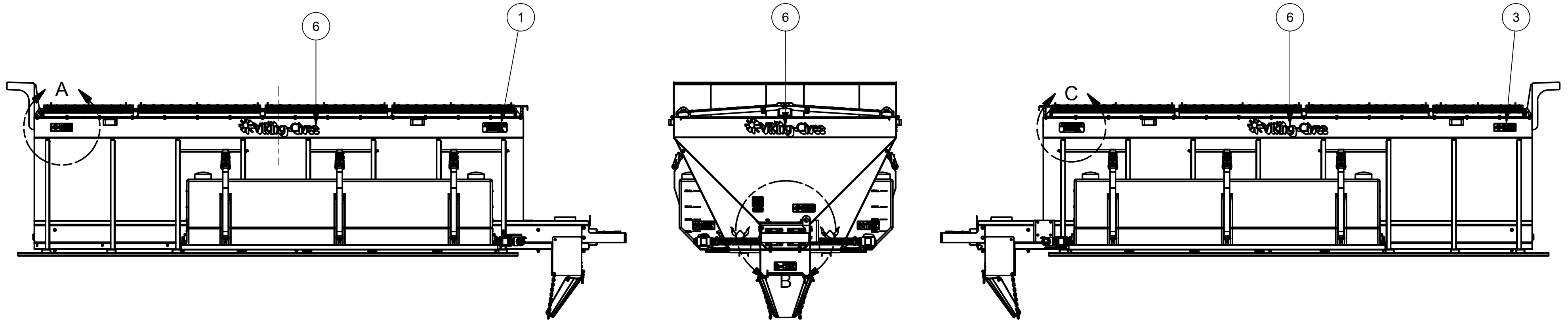
<p style="text-align: center;"><u>CONDITION 1</u></p> <p>Pump cavitation recognized by excessive noise.</p> <p><u>CAUSE</u></p> <ul style="list-style-type: none"> a. Air entering system through suction lines. b. Suction line kinked, twisted or too long. c. Inadequate size suction line. d. Oil too heavy. e. Excessive pump speed. Normal pump speed 1200 to 1500 RPM. <p><u>CORRECTION</u></p> <ul style="list-style-type: none"> a. Check line from reservoir for possible leaks. b. Install suction line as short and straight as possible. c. Increase suction line size. d. Drain and replace with a low viscosity non-detergent oil. e. Decrease PTO Speed accordingly. 	<p style="text-align: center;"><u>CONDITION 3</u></p> <p>Erratic operation of auger and/or spinner.</p> <p><u>CAUSE</u></p> <ul style="list-style-type: none"> a. Low oil. b. Worn or defective motor. c. Dirty, worn or defective flow control valve. d. Plugged filter. e. Relief valve setting too low. f. Pump Cavitation. g. Air vent on reservoir tank is blocked. <p><u>CORRECTION</u></p> <ul style="list-style-type: none"> a. Fill reservoir to a 3/4 full level. *b. Repair or replace motor. *c. Clean, repair, or replace flow control. d. Replace filter element and clean filter. e. Adjust relief valve for 1500 PSI. f. Refer to pump section. g. Clean or replace vent cap to admit atmospheric pressure to inside the tank.
<p style="text-align: center;"><u>CONDITION 2</u></p> <p>Slow operation of auger and/or spinner.</p> <p><u>CAUSE</u></p> <ul style="list-style-type: none"> a. Worn or defective pump. b. Worn or defective motor. c. Pump cavitation. d. Insufficient pump speed. <p><u>CORRECTION</u></p> <ul style="list-style-type: none"> a. Repair or replace pump. *b. Repair or replace motor. c. Refer to pump suction. d. Pump capacity is 16 GPM at 1000 RPM. Increase PTO accordingly. 	<p style="text-align: center;"><u>CONDITION 4</u></p> <p>Auger and/or spinner will not operate.</p> <p><u>CAUSE</u></p> <ul style="list-style-type: none"> a. Quick disconnects are dirty, damaged, or improperly connected. b. Hose connections are wrong. c. Foreign material in valve compensator. <p><u>CORRECTION</u></p> <ul style="list-style-type: none"> a. Clean or replace and properly connect. b. Refer to illustration. c. Remove compensator and clean.

*** Viking-Cives warranty does not cover unauthorized disassembly of Hydraulic or Electric components.**

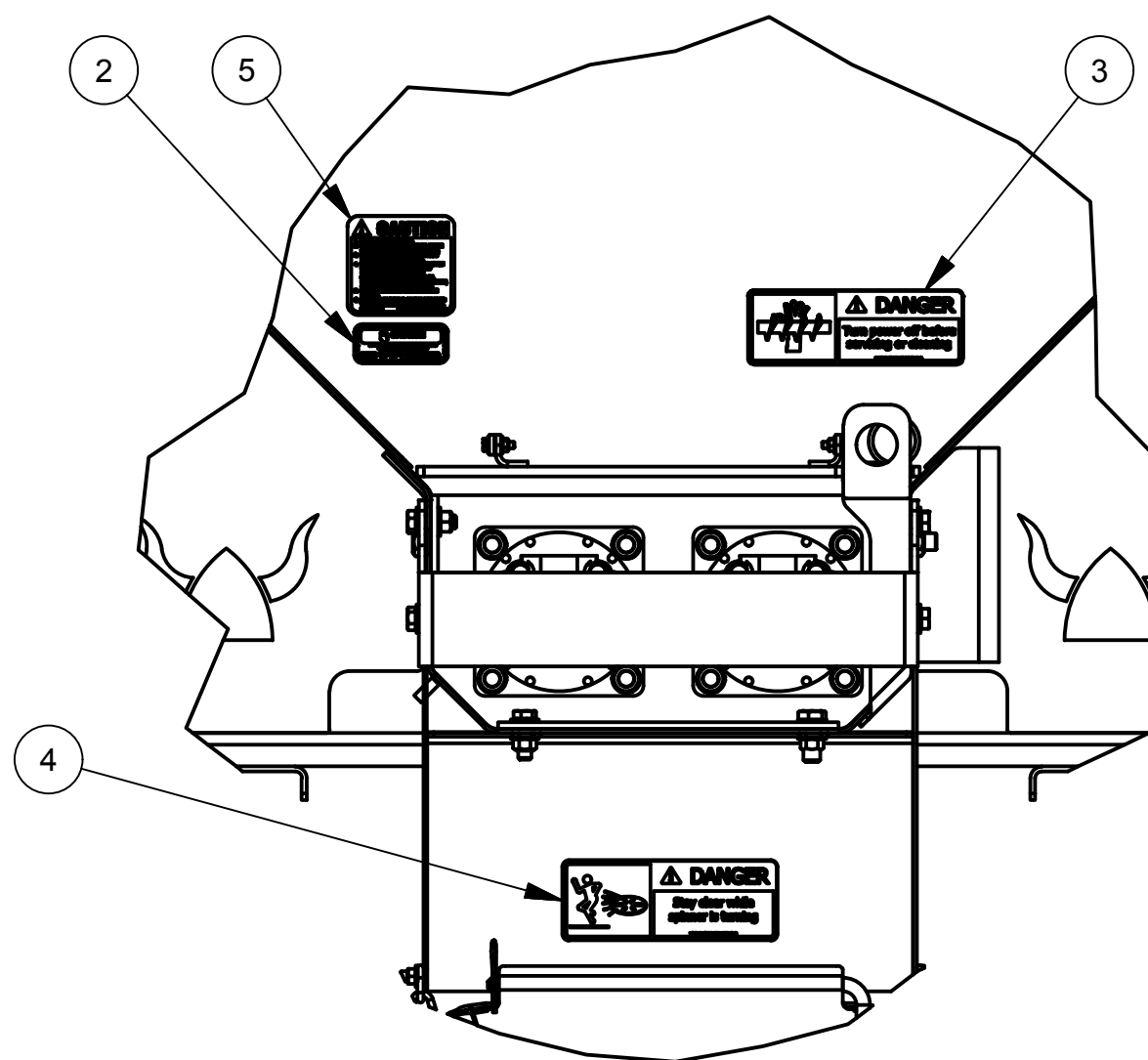


22956 HWY 61, MORLEY, MO 63767, PH: 573.262.3545, FX: 573.232.3369

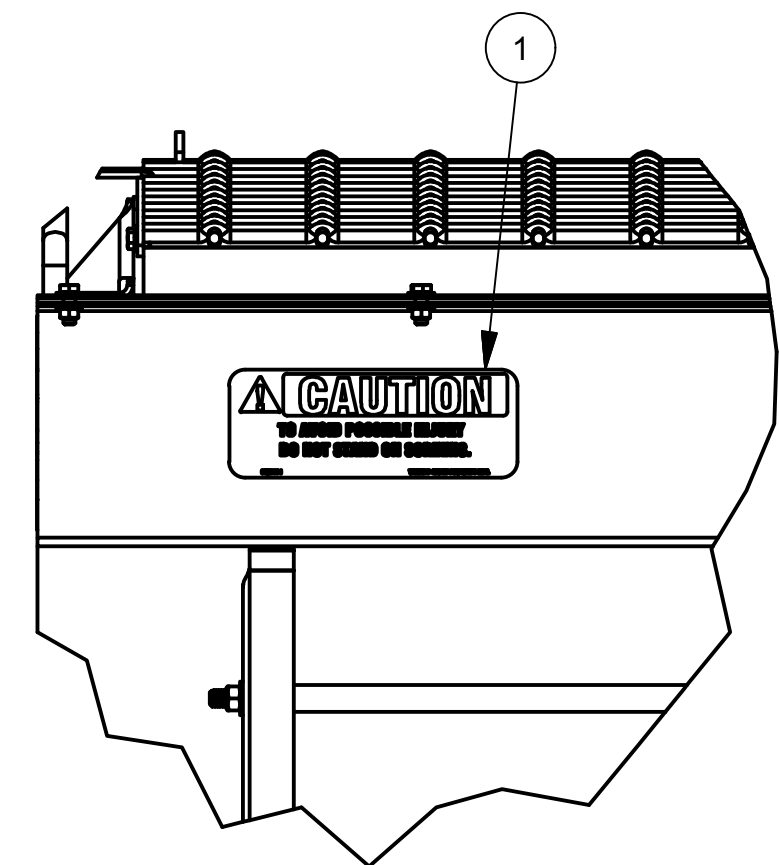
DUAL AUGER SPREADER SAFETY DECAL LAYOUT SAFETY DECAL KIT #46101386



DETAIL A
SCALE 1 : 6



DETAIL B
SCALE 1 : 7



DETAIL C
SCALE 1 : 6

EQUIPMENT MAY NOT BE EXACTLY AS SHOWN. SOME COMPONENTS MAY BE OPTIONAL
TO MAINTAIN OUR ON-GOING PRODUCT AND DEVELOPMENT IMPROVEMENT PROGRAM, VIKING-CIVES RESERVES THE RIGHT TO CHANGE EQUIPMENT & SPECIFICATION WITHOUT NOTICE.



22956 HWY 61, MORLEY, MO 63767, PH: 573.262.3545, FX: 573.232.3369

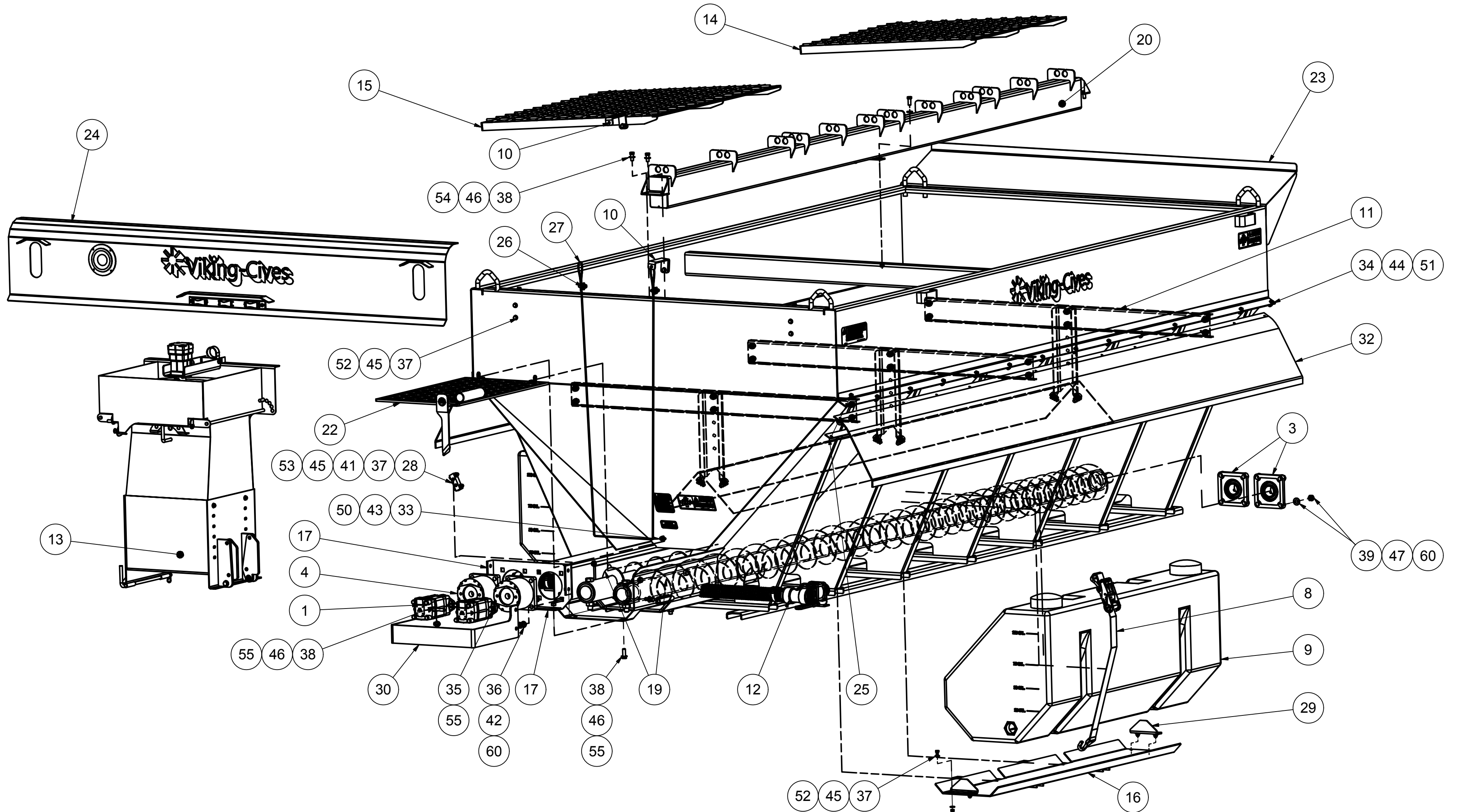
DUAL AUGER SPREADER SAFETY DECAL LAYOUT
SAFETY DECAL KIT #46101386

ITEM	DRAWING NO.	ALT. ITEM NO.	DESCRIPTION	QTY
1	0820001		DECAL DO NOT STAND ON SCREENS	2
2	0820047		DECAL WARNING SEE MANUAL	1
3	46873012		DECAL TURN OFF POWER BEFORE SERVICING OR CLEANING	3
4	46873013		DECAL STAY CLEAR WHILE SPINNER IS TURNING	1
5	46101386		DECAL KEEP ALL SCREENS IN PLACE	1
6	51530013		LARGE SCALE VIKING-CIVES BODY DECAL (BLACK)	3

EQUIPMENT MAY NOT BE EXACTLY AS SHOWN. SOME COMPONENTS MAY BE OPTIONAL
 TO MAINTAIN OUR ON-GOING PRODUCT AND DEVELOPMENT IMPROVEMENT PROGRAM, VIKING-CIVES RESERVES THE RIGHT TO CHANGE EQUIPMENT & SPECIFICATION WITHOUT NOTICE.

152-82-60 DUAL AUGER SPREADER ASSEMBLY (NY)

PART NO. 54301141



EQUIPMENT MAY NOT BE EXACTLY AS SHOWN. SOME COMPONENTS MAY BE OPTIONAL TO MAINTAIN OUR ON-GOING PRODUCT AND DEVELOPMENT IMPROVEMENT PROGRAM, VIKING-CIVES RESERVES THE RIGHT TO CHANGE EQUIPMENT & SPECIFICATION WITHOUT NOTICE.



22956 HWY 61, MORLEY, MO 63767, PH: 573.262.3545, FX: 573.232.3369

152-82-60 DUAL AUGER SPREADER ASSEMBLY (NY)

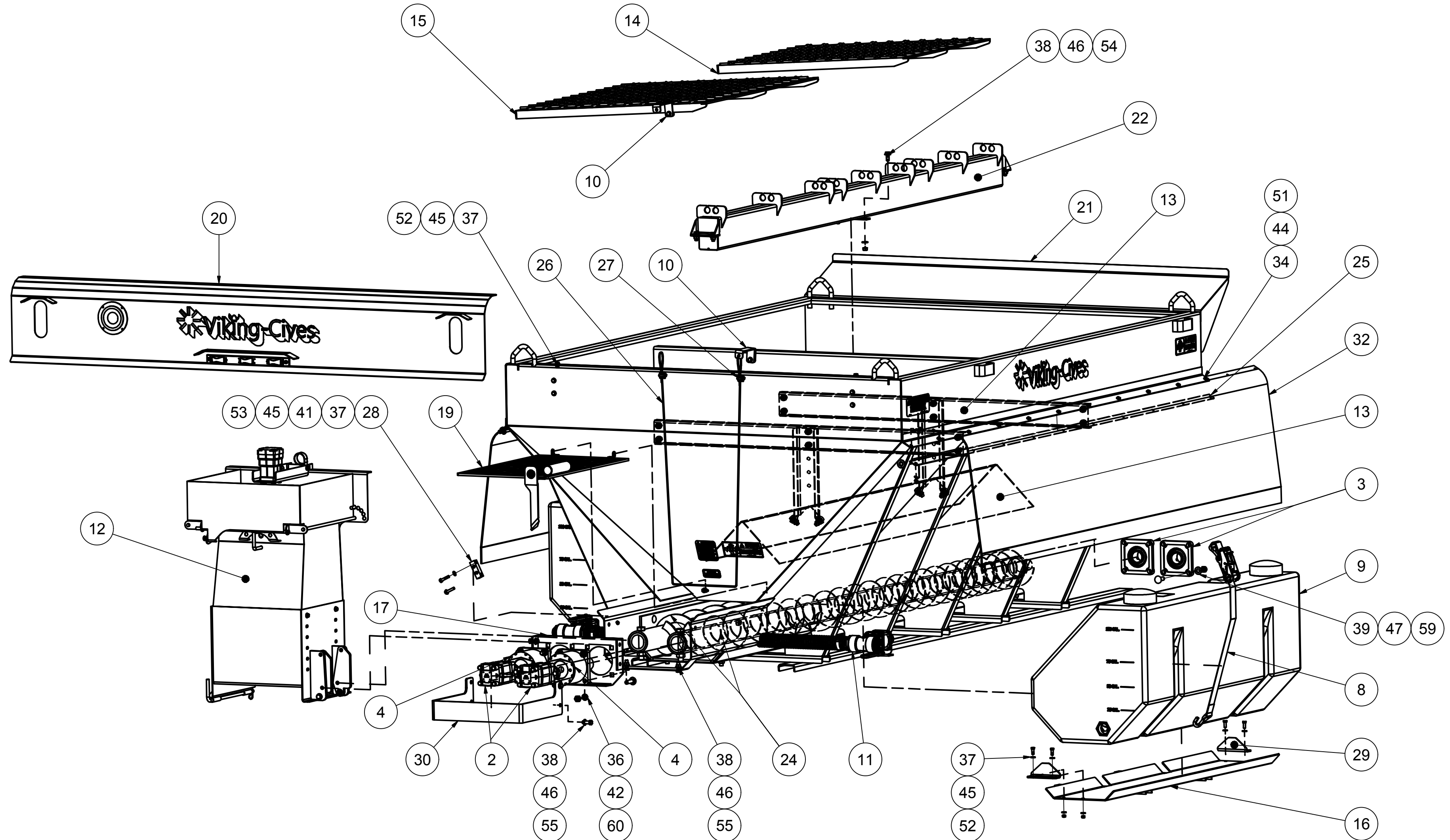
PART NO. 54301141

ITEM	DRAWING NO.	ALT. ITEM NO.	DESCRIPTION	QTY	ITEM	DRAWING NO.	ALT. ITEM NO.	DESCRIPTION	QTY
1	0550491		MOTOR HYD 24.4 CU IN W SENSOR PLDA	1	31	54330020		13' FORMED POLY TROUGH	1
2	0550492		MOTOR HYD 24.4 CU IN PLDA	1	32	54330021		RUBBER DEFLECTOR 156" X 16" X 1/8" 2 PLY	2
3	0610042		BEARING 4 BOLT FLANGE MED DUTY 2 IN	2	33	HW14AS-04	81062Z	FLATWASHER SAE 1/4 SS	4
4	0730121		GEAR REDUCER PLANETARY PLDA	2	34	HW14AS-05		FLATWASHER SAE 5/16 STAINLESS	56
5	10857-01937		GROMMET PASS THROUGH 3/4" I.D. 1 1/16" CUT HOLE DIA.	3	35	HW14F-08		LOCKWASHER SPLIT 1/2 STAINLESS	4
6	44843413		GROTE SUPERNOVA LED 3 LIGHT BAR	1	36	HW14F-10		LOCKWASHER SPLIT 5/8 STAINLESS	8
7	44847102		TRUCKLITE JUNCTION BOX	1	37	HW14J-06		FLATWASHER SAE 3/8 STAINLESS	32
8	47149014		RATCHET STRAP HOLD DOWN PREWET TANK	4	38	HW14J-08		FLATWASHER SAE 1/2 STAINLESS	28
9	54301057		100 GALLON PREWET TANK ASSEMBLY	2	39	HW14J-10		FLATWASHER SAE 5/8 STAINLESS	8
10	54301110		SCREEN HOLD DOWN ASSEMBLY	8	40	HW14J-12		FLATWASHER SAE 3/4 STAINLESS	4
11	54301119		13' INVERTED "V" ASSEMBLY	1	41	HW29A-02	80577	GREASE FITTING 1/8 NPT STR	2
12	54301129		TENNESSEE SPRD PRE-WET CROSS OVER KIT	1	42	HW30AS-10		NUT HEX 5/8 UNC STAINLESS	8
13	54301142		AUGER SPREADER PIVOTABLE REAR CHUTE ASS'Y	1	43	HW30ES-04		NUT HEX TOPLOCK 1/4 UNC STAINLESS	2
14	54303008		VIKING SPREADER GRATING WELDMENT - 33"	6	44	HW30ES-05		NUT HEX TOPLOCK 5/16 UNC STAINLESS	28
15	54303009		VIKING SPREADER 4 FT SCREEN WELDMENT	2	45	HW30ES-06		NUT HEX TOPLOCK 3/8 UNC STAINLESS	16
16	54303068		PRE-WET TANK MOUNTING TRAY WELDMENT	2	46	HW30ES-08		NUT HEX 1/2 UNC TOP LOCK STAINLESS	16
17	54303138		DUAL MOTOR ATTACHING WELDMENT BOLT-IN	1	47	HW30ES-10		NUT HEX 5/8 UNC TOPLOCK STAINLESS	20
18	54303158		13' AUGER WELDMENT DRIVERS SIDE	1	48	HW30ES-12		STAINLESS NUT HEX 3/4 UNC TOPLOCK ZINC	4
19	54303159		13' AUGER WELDMENT PASSENGER SIDE	1	49	HW30ES-14		NUT HEX 7/8 UNC TOPLOCK STAINLESS	2
20	54303160		13' TDOT SCREEN SUPPORT BAR WELDMENT	1	50	HW40AS-0408		BOLT HEX 1/4 X 1 UNC STAINLESS	2
21	54303161		RATCHET TIE BAR WELDMENT PRE-WET	4	51	HW40AS-0508		BOLT HEX 5/16 X 1 UNC STAINLESS	28
22	54303175		REAR TROUGH SAFETY GRATE WELDMENT	1	52	HW40AS-0608		BOLT HEX 3/8 X 1 UNC STAINLESS	14
23	54303193		156-82-60 AUGER SPREADER WELD'T (NY)	1	53	HW40AS-0614		BOLT HEX 3/8 X 1 3/4 UNC STAINLESS	2
24	54303197		WIND DEFLECTOR/LIGHT BAR WELDMENT	1	54	HW40AS-0810		BOLT HEX 1/2 X 1 1/4 UNC STAINLESS	6
25	54310043		13' SPREADER RUBBER RETAINING STRAP	2	55	HW40AS-0812		BOLT HEX 1/2 X 1 1/2 UNC STAINLESS	10
26	54315074		STAINLESS STEEL 1/4 CABLE CLAMP	2	56	HW40AS-1212		BOLT HEX 3/4 X 1 1/2 UNC STAINLESS	4
27	54315079		1/4" WIRE ROPE SAFETY SCREEN 62" SD HEIGHT	1	57	HW40AS-1444		BOLT HEX 7/8 X 5 1/2 UNC STAINLESS	2
28	54319004		VIKING SPREADER GREASE BLOCK	1	58	HW40CS-1012		BOLT CARRIAGE 5/8 X 1 1/2 UNC STAINLESS	12
29	54322113		FORMED PREWET TANK ANTI-SLIDING PLATE	4	59	HW40CS-1016		BOLT CARRIAGE 5/8 X 2 UNC STAINLESS	8
30	54322261		FORMED REAR MOTOR GUARD	1	60	HW40CS-1020		BOLT CARRIAGE 5/8 X 2 1/2 UNC STAINLESS	8

EQUIPMENT MAY NOT BE EXACTLY AS SHOWN. SOME COMPONENTS MAY BE OPTIONAL
TO MAINTAIN OUR ON-GOING PRODUCT AND DEVELOPMENT IMPROVEMENT PROGRAM, VIKING-CIVES RESERVES THE RIGHT TO CHANGE EQUIPMENT & SPECIFICATION WITHOUT NOTICE.

120-82-54 DUAL AUGER SPREADER ASSEMBLY (NY)

PART NO. 54301143



EQUIPMENT MAY NOT BE EXACTLY AS SHOWN. SOME COMPONENTS MAY BE OPTIONAL
TO MAINTAIN OUR ON-GOING PRODUCT AND DEVELOPMENT IMPROVEMENT PROGRAM, VIKING-CIVES RESERVES THE RIGHT TO CHANGE EQUIPMENT & SPECIFICATION WITHOUT NOTICE.



22956 HWY 61, MORLEY, MO 63767, PH: 573.262.3545, FX: 573.232.3369

120-82-54 DUAL AUGER SPREADER ASSEMBLY (NY)

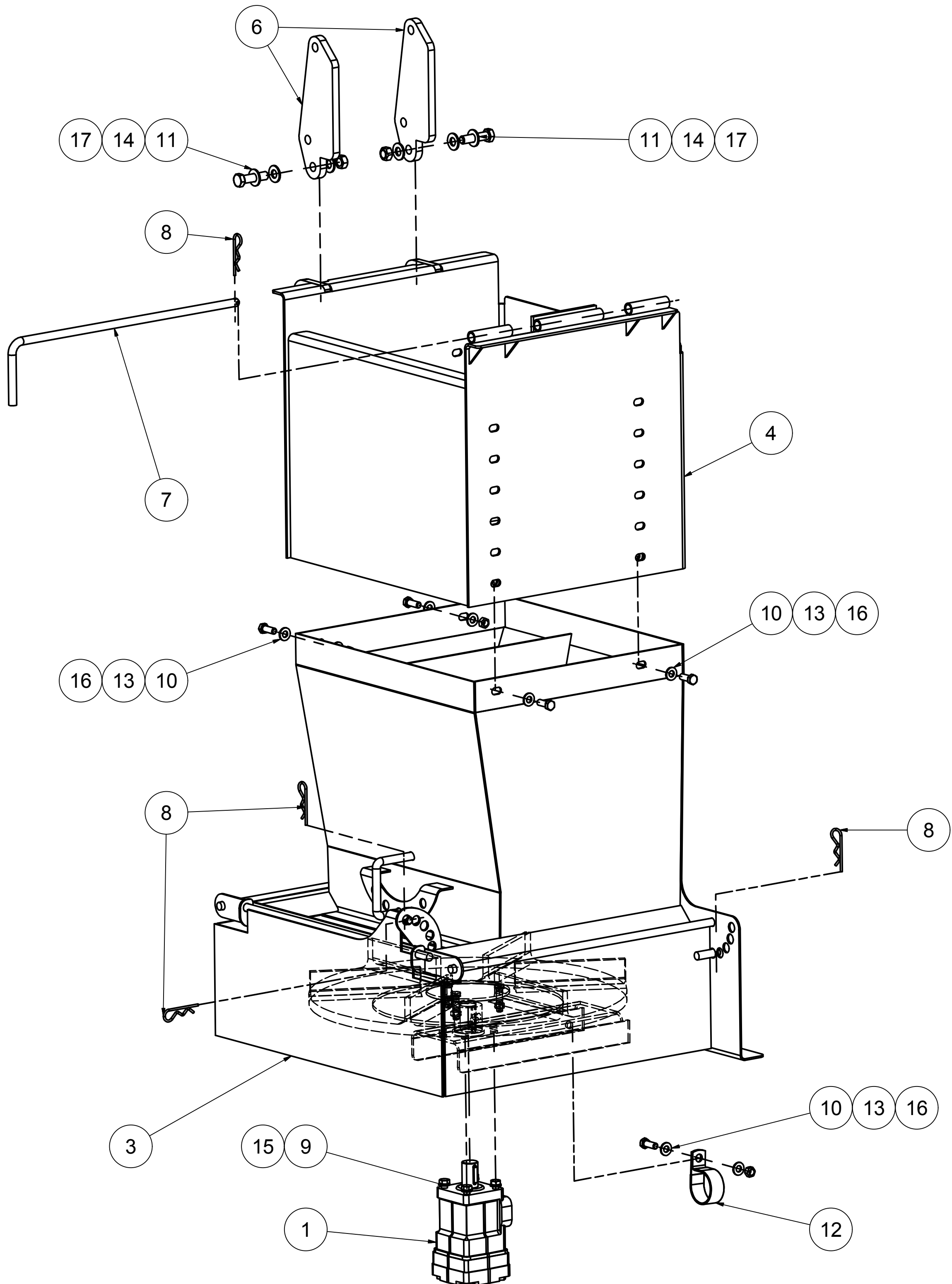
PART NO. 54301143

ITEM	DRAWING NO.	ALT. ITEM NO.	DESCRIPTION	QTY	ITEM	DRAWING NO.	ALT. ITEM NO.	DESCRIPTION	QTY
1	0550491		MOTOR HYD 24.4 CU IN W SENSOR PLDA	1	31	54330028		10' FORMED POLY TROUGH DA SPREADER	1
2	0550492		MOTOR HYD 24.4 CU IN PLDA	1	32	54330029		RUBBER DEFLECTOR 156" X 16" X 1/8" 2 PLY	2
3	0610042		BEARING 4 BOLT FLANGE MED DUTY 2 IN	2	33	HW14AS-04	81062Z	FLATWASHER SAE 1/4 SS	4
4	0730121		GEAR REDUCER PLANETARY PLDA	2	34	HW14AS-05		FLATWASHER SAE 5/16 STAINLESS	44
5	10857-01937		GROMMET PASS THROUGH 3/4" I.D. 1 1/16" CUT HOLE DIA.	3	35	HW14F-08		LOCKWASHER SPLIT 1/2 STAINLESS	4
6	44843413		GROTE SUPERNOVA LED 3 LIGHT BAR	1	36	HW14F-10		LOCKWASHER SPLIT 5/8 STAINLESS	8
7	44847102		TRUCKLITE JUNCTION BOX	1	37	HW14J-06		FLATWASHER SAE 3/8 STAINLESS	32
8	47149014		RATCHET STRAP HOLD DOWN PREWET TANK	4	38	HW14J-08		FLATWASHER SAE 1/2 STAINLESS	28
9	54301057		100 GALLON PREWET TANK ASSEMBLY	2	39	HW14J-10		FLATWASHER SAE 5/8 STAINLESS	8
10	54301110		SCREEN HOLD DOWN ASSEMBLY	6	40	HW14J-12		FLATWASHER SAE 3/4 STAINLESS	4
11	54301129		TENNESSEE SPRD PRE-WET CROSS OVER KIT	1	41	HW29A-02	80577	GREASE FITTING 1/8 NPT STR	2
12	54301142		AUGER SPREADER PIVOTABLE REAR CHUTE ASS'Y	1	42	HW30AS-10		NUT HEX 5/8 UNC STAINLESS	8
13	54301144		10' INVERTED "V" ASSEMBLY DA SPREADER	1	43	HW30ES-04		NUT HEX TOPLOCK 1/4 UNC STAINLESS	2
14	54303008		VIKING SPREADER GRATING WELDMENT - 33"	4	44	HW30ES-05		NUT HEX TOPLOCK 5/16 UNC STAINLESS	22
15	54303009		VIKING SPREADER 4 FT SCREEN WELDMENT	2	45	HW30ES-06		NUT HEX TOPLOCK 3/8 UNC STAINLESS	16
16	54303068		PRE-WET TANK MOUNTING TRAY WELDMENT	2	46	HW30ES-08		NUT HEX 1/2 UNC TOP LOCK STAINLESS	16
17	54303138		DUAL MOTOR ATTACHING WELDMENT BOLT-IN	1	47	HW30ES-10		NUT HEX 5/8 UNC TOPLOCK STAINLESS	20
18	54303161		RATCHET TIE BAR WELDMENT PRE-WET	4	48	HW30ES-12		STAINLESS NUT HEX 3/4 UNC TOPLOCK ZINC	4
19	54303175		REAR TROUGH SAFETY GRATE WELDMENT	1	49	HW30ES-14		NUT HEX 7/8 UNC TOPLOCK STAINLESS	2
20	54303197		WIND DEFLECTOR/LIGHT BAR WELDMENT	1	50	HW40AS-0408		BOLT HEX 1/4 X 1 UNC STAINLESS	2
21	54303198		120-82-54 AUGER SPREADER WELD'T (NY)	1	51	HW40AS-0508		BOLT HEX 5/16 X 1 UNC STAINLESS	22
22	54303200		10' SCREEN SUPPORT BAR WELDMENT	1	52	HW40AS-0608		BOLT HEX 3/8 X 1 UNC STAINLESS	14
23	54303201		10' AUGER WELDMENT PASSENGER SIDE	1	53	HW40AS-0614		BOLT HEX 3/8 X 1 3/4 UNC STAINLESS	2
24	54303202		10' AUGER WELDMENT DRIVERS SIDE	1	54	HW40AS-0810		BOLT HEX 1/2 X 1 1/4 UNC STAINLESS	6
25	54310052		10' SPREADER RUBBER RETAINING STRAP	2	55	HW40AS-0812		BOLT HEX 1/2 X 1 1/2 UNC STAINLESS	10
26	54315073		1/4" WIRE ROPE SAFETY SCREEN	1	56	HW40AS-1212		BOLT HEX 3/4 X 1 1/2 UNC STAINLESS	4
27	54315074		STAINLESS STEEL 1/4 CABLE CLAMP	2	57	HW40AS-1444		BOLT HEX 7/8 X 5 1/2 UNC STAINLESS	2
28	54319004		VIKING SPREADER GREASE BLOCK	1	58	HW40CS-1012		BOLT CARRIAGE 5/8 X 1 1/2 UNC STAINLESS	12
29	54322113		FORMED PREWET TANK ANTI-SLIDING PLATE	4	59	HW40CS-1016		BOLT CARRIAGE 5/8 X 2 UNC STAINLESS	8
30	54322261		FORMED REAR MOTOR GUARD	1	60	HW40CS-1020		BOLT CARRIAGE 5/8 X 2 1/2 UNC STAINLESS	8

EQUIPMENT MAY NOT BE EXACTLY AS SHOWN. SOME COMPONENTS MAY BE OPTIONAL
TO MAINTAIN OUR ON-GOING PRODUCT AND DEVELOPMENT IMPROVEMENT PROGRAM, VIKING-GIVES RESERVES THE RIGHT TO CHANGE EQUIPMENT & SPECIFICATION WITHOUT NOTICE.

AUGER SPREADER PIVOTABLE REAR CHUTE ASSEMBLY (NY)

PART NO. 54301142



EQUIPMENT MAY NOT BE EXACTLY AS SHOWN. SOME COMPONENTS MAY BE OPTIONAL
TO MAINTAIN OUR ON-GOING PRODUCT AND DEVELOPMENT IMPROVEMENT PROGRAM, VIKING-GIVES RESERVES THE RIGHT TO CHANGE EQUIPMENT & SPECIFICATION WITHOUT NOTICE.



22956 HWY 61, MORLEY, MO 63767, PH: 573.262.3545, FX: 573.232.3369

AUGER SPREADER PIVOTABLE REAR CHUTE ASSEMBLY (NY) PART NO. 54301142

ITEM	DRAWING NO.	ALT. ITEM NO.	DESCRIPTION	QTY
1	43040085		HYD SPINNER MOTOR (NEW STYLE) O-RING	1
2	54301098		STRAIGHT 20" SPINNER DISK ASSEMBLY	1
3	54303194		LOWER CHUTE WELD'T DA (7" DIA SCREWS)	1
4	54303195		UPPER CHUTE WELD'T DA (7" DIA SCREWS)	1
5	54303196		PIVOTING CHUTE CONNECTION TUBE WELD'T	1
6	54304038		DS CONVEYOR CHUTE PIVOT LUG	2
7	54308031		SPINNER/CHUTE RETAINER PIN	1
8	HW13P-0434	80536B	COTTER HAIRPIN 1/8 X 2 5/8	5
9	HW14F-06		LOCKWASHER SPLIT 3/8 STAINLESS	4
10	HW14J-06		FLATWASHER SAE 3/8 STAINLESS	10
11	HW14J-08		FLATWASHER SAE 1/2 STAINLESS	6
12	HW23E-32	80729C	STAINLESS HOSE CLAMP 2 INSULATED	1
13	HW30ES-06		NUT HEX TOPLOCK 3/8 UNC STAINLESS	5
14	HW30ES-08		NUT HEX 1/2 UNC TOP LOCK STAINLESS	2
15	HW40AS-0606		BOLT HEX 3/8 X 3/4 UNC STAINLESS	4
16	HW40AS-0608		BOLT HEX 3/8 X 1 UNC STAINLESS	5
17	HW40AS-0816	81083	BOLT HEX 1/2 X 2 UNC STAINLESS	2
18	HW70ESS-0608		SET SCREW SS 3/8 X 1/2 CUP PNT SQ HEAD	2