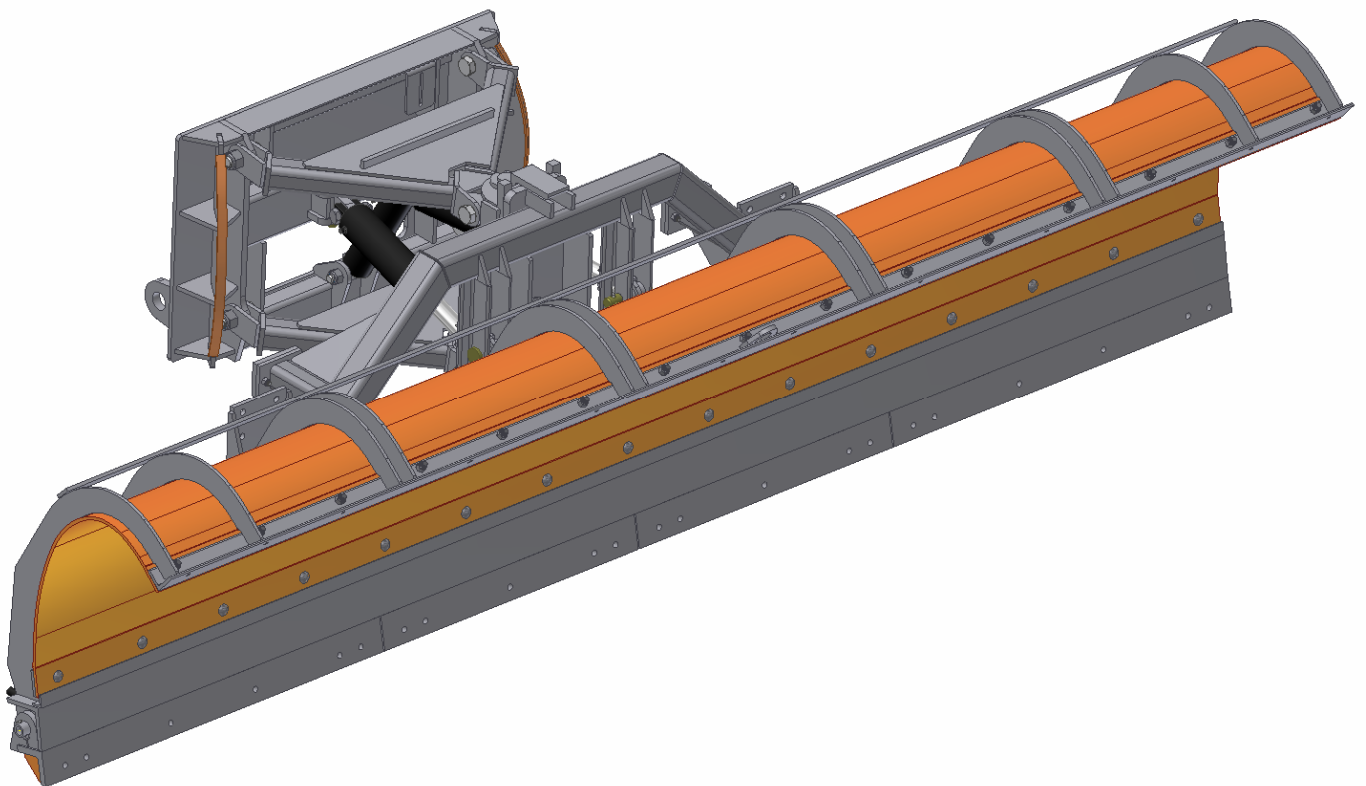




22956 Highway 61 Morley, MO 63767 Phone: (573) 262-3545 Fax: (573) 262-3369

Owners Manual

14' MW Parallel Lift J-Plow Assembly





22956 Highway 61 Morley, MO 63767 Phone: (573) 262-3545 Fax: (573) 262-3369

***** LIMITED WARRANTY *****

Viking - Cives Midwest, Inc. warrants products of its manufacture against defects in workmanship and material for a period of one year from date of shipment to customer; and in consequence of this warranty, any component part or parts of such products proving defective within the above specified time will be repaired or replaced F.O.B. factory, providing such parts are returned, transportation prepaid, to the factory and found defective by **Viking - Cives Midwest, Inc.** This warranty will not apply to any product which shall have been repaired or altered outside of the **Viking - Cives Midwest, Inc.** factory in any way so as, in **Viking - Cives Midwest, Inc.** sole judgment, to affect its stability or reliability, nor which has been subjected to misuse, negligence or accident.

The obligations of **Viking - Cives Midwest, Inc.** under this limited warranty are limited to the replacement of defective parts as set forth above; such obligations are exclusive and in lieu of all other remedies, warranties, guarantees or liabilities, express or implied, with respect to each product delivered hereunder, arising by law or otherwise (including without limitation any obligation or liability of **Viking - Cives Midwest, Inc.**, arising from negligence or with respect to fitness for a particular purpose, merchantability, loss or use, revenue or profit, or any incidental, indirect, special or consequential damages or injuries; and all other remedies, warranties, guarantees, or liabilities are hereby expressly excluded and disclaimed. This limited warranty shall not be extended, altered, or varied except by a written instrument signed by **Viking - Cives Midwest, Inc.**

Viking - Cives Midwest, Inc. assumes no responsibility for engines, electrical equipment, or any other equipment and accessories not manufactured by **Viking - Cives Midwest, Inc.**

ORDERING PARTS

Delays and errors can be eliminated when ordering instructions are followed correctly.

1. Place orders direct with Viking - Cives Midwest, Inc. / nearest dealer.
2. State Company name, address, and postal zip code.
3. Give the exact model and serial number of the equipment/unit (stamped on the unit identification plate.)
4. Furnish part number, description and quantities required. *Note: An alpha designation in the Item ID column indicates a sub-component for that parent item. When placing parts orders reference the parent item to receive a complete assembly. Individual items can be ordered separately if required by ordering the alpha designated item number.*
5. Print or type order clearly. **Note: A purchase order is required for the warranty parts.**
6. Give specific shipping instructions.

VIKING - CIVES MIDWEST, INC. – 22956 Hwy 61 Morley, MO 63767
(573) 262-3545 Phone; (573) 262-3369 Fax



22956 Highway 61 Morley, MO 63767 Phone: (573) 262-3545 Fax: (573) 262-3369

WARRANTY REQUEST PROCEDURE

All repairs considered for warranty that are performed outside of Viking - Cives Midwest, Inc.; require prior written authorization from Viking - Cives Midwest, Inc. Failure to obtain written warranty authorization prior to repairs may result in the rejection of the warranty claim. To obtain warranty consideration one must provide Viking - Cives Midwest, Inc. with all required unit information including date of manufacture and serial numbers. In most cases this information is easily obtained from the "Shipped Unit Tag" (located in most cases inside the driver's side door) and/or individual unit serial tag.

(A) To obtain Parts Warranty Consideration:

- (1) Contact Viking - Cives Midwest, Inc. customer service to obtain a Return Goods Authorization (RGA) number. Any product arriving at Viking - Cives Midwest, Inc. without a RGA number will be rejected and returned to the sender at his or her own expense.
- (2) Goods are to be shipped prepaid to Viking - Cives Midwest, Inc. 22956 Highway 61 Morley, MO 63767. **All items should be clearly marked with the appropriate RGA number.**
- (3) When a replacement item is shipped to replace a defective part for warranty consideration the following additional steps will occur:
 - a) A Purchase order must be received for the replacement parts.
 - b) An invoice will be generated for the value of the replacement item(s).
 - c) The defective part(s) must be returned (prepaid) to Viking - Cives Midwest, Inc.
 - d) Upon receiving the defective part(s) Viking - Cives Midwest, Inc. will issue and process a Discrepant Material Report (DMR). Once the evaluation of the DMR report is complete and the parts are deemed warranty, a credit will be issued against the outstanding invoice. **If the part(s) are deemed Non-warranty the invoice will remain outstanding to be paid to Viking - Cives Midwest, Inc.** Any part(s) to be returned to the customer will be at his or her own expense.

(B) To obtain Labor Parts Repair Warranty Consideration:

In the event that repairs are required outside of Viking - Cives Midwest, Inc. facility that may be considered for warranty the following steps must occur. **Notification of Viking - Cives Midwest, Inc. customer service must take place prior to the start of any repairs.**

- (1) Contact Viking - Cives Midwest, Inc. customer service to obtain a Warranty Claim Form (WCF) and warranty authorization number.
- (2) Fill out all required WCF information and fax or mail the completed form to Viking - Cives Midwest, Inc., attention Customer Service Department.
- (3) Once the WCF report has been reviewed warranty authorization will be granted or denied. **NOTE: Viking - Cives Midwest, Inc. warranty labor rates will apply unless specifically determined otherwise.** Any part(s) involved in a WCF request must follow the Parts Warranty Consideration procedures.

For Customer Service and/or Parts requests please contact:

Service Department – DeWayne Stroder (573) 262-3545; (573) 262-3540 fax



22956 Highway 61 Morley, MO 63767 Phone: (573) 262-3545 Fax: (573) 262-3369

PERIODIC MAINTENANCE INSPECTION
DAILY INSPECTION AND LUBRICATION

Daily inspection along with periodic preventive maintenance will reduce the chance of any major repairs and down time during equipment use.

1. Check the fluid level in the hydraulic oil reservoir. If the sight indicated low oil level, add the appropriate amount of the specified hydraulic fluid. **Cold Weather Operation:** All equipment is designed to operate with hydraulic oil minimally warm. During cold weather conditions, it is recommended that the truck be run at idle with the pump engaged and circulating the oil through the system before operating equipment.
2. Check all components for loose and/or missing fasteners, if required tighten and/or replace.
3. Visually inspect all battery terminals and electrical connections, wires, switches, etc. for signs of corrosion, wear, loose and/or broken connections, etc. At the beginning of each shift review all lighting accessories to ensure proper working conditions, immediately replace any broken or non-functioning bulbs and/or lenses.
4. Visually inspect all hydraulic connections and hoses for cracks and/or leaks. Rupturing hoses may produce a high-pressure stream of hot hydraulic oil.
5. Check all cables and chains for excessive wear or damage.
6. Visually inspect plow units. Check cutting edges. If cutting edge has excessive wear remove and rotate, or if required, replace. **CAUTION:** Do not allow cutting edge to wear down to mounting angle. Any wear to the mounting angle may affect the operation and safety of the equipment. Replacement is costly.
7. At the beginning of each shift visually inspect all caution and warning decals. All decals should be complete and legible. If decals are not legible, clean them. If cleaning the decals does not make them legible, install new decals.



22956 Highway 61 Morley, MO 63767 Phone: (573) 262-3545 Fax: (573) 262-3369

GENERAL OPERATING INSTRUCTIONS

1. The operator should familiarize himself with all equipment prior to operation. The in-cab controls are placed at a comfortable reach of the operator, with an allowable amount of adjustment. If necessary, the controls can be adjusted for either driver or passenger use.
2. See cab control layout. All levers are clearly marked as to the equipment/function they control.
3. To raise the plow or wing, pull back on the appropriate control level, to lower the plow or wing, push the control level forward. **NOTE:** The in cab controls are proportional to the hydraulic valve, therefore the further the control lever is moved the faster the plow or wing will raise or lower.
4. Before putting any equipment into use, check for any worn, damaged or loose components, if necessary repair or replace. Listen for any unusual sounds, if necessary repair and/or replace worn or damaged parts.
5. Before operating any equipment be sure to read and fully understand all caution and safety warnings. Familiarize yourself and others with all caution/warning labels and their locations. Make sure all labels are complete and legible. Replace any labels that have become unreadable and/or missing. Replacement labels can be purchased directly from Viking-Cives Midwest, Inc.

REGISTRATION OF EQUIPMENT AND WARRANTY INFORMATION

Before using equipment check for damage. Report any damage to equipment at once to Viking-Cives Midwest, Inc. The warranty period becomes effective upon date of delivery of equipment unless other arrangements have been made with a Viking-Cives Midwest, Inc. distributor or Viking-Cives Midwest, Inc. The information required to register the equipment may be found on the serial number tag secured to the equipment.

A WORD ABOUT SAFETY

The equipment described in this manual is normally being operated in winter conditions with bad weather and snow & ice conditions. Due to these adverse operating conditions it is important that you the operator use good safety practices at all times to protect yourself, co-workers, and others when using the equipment.

It is not practical or possible to warn you about all the hazards associated with the operation and maintenance of this equipment. You use your own good judgment supplemented with the information found on the safety decals, instructions in this manual, your employer's safety programs, safety codes, local, state/provincial, and federal laws, rules and regulations.

When operating/performing maintenance on this equipment, trouble shooting equipment operations and loading or unloading the sanders/spreaders with material observe and obey all safety decals on the equipment and warnings listed in the manual. Failure to do this could result in serious injury or death to you or others.

Remember at all times that as the operator you are responsible for the safe operation of this equipment and responsible for the safety of others. Good safety practices not only protect you but also protect the people around you.



22956 Highway 61 Morley, MO 63767 Phone: (573) 262-3545 Fax: (573) 262-3369

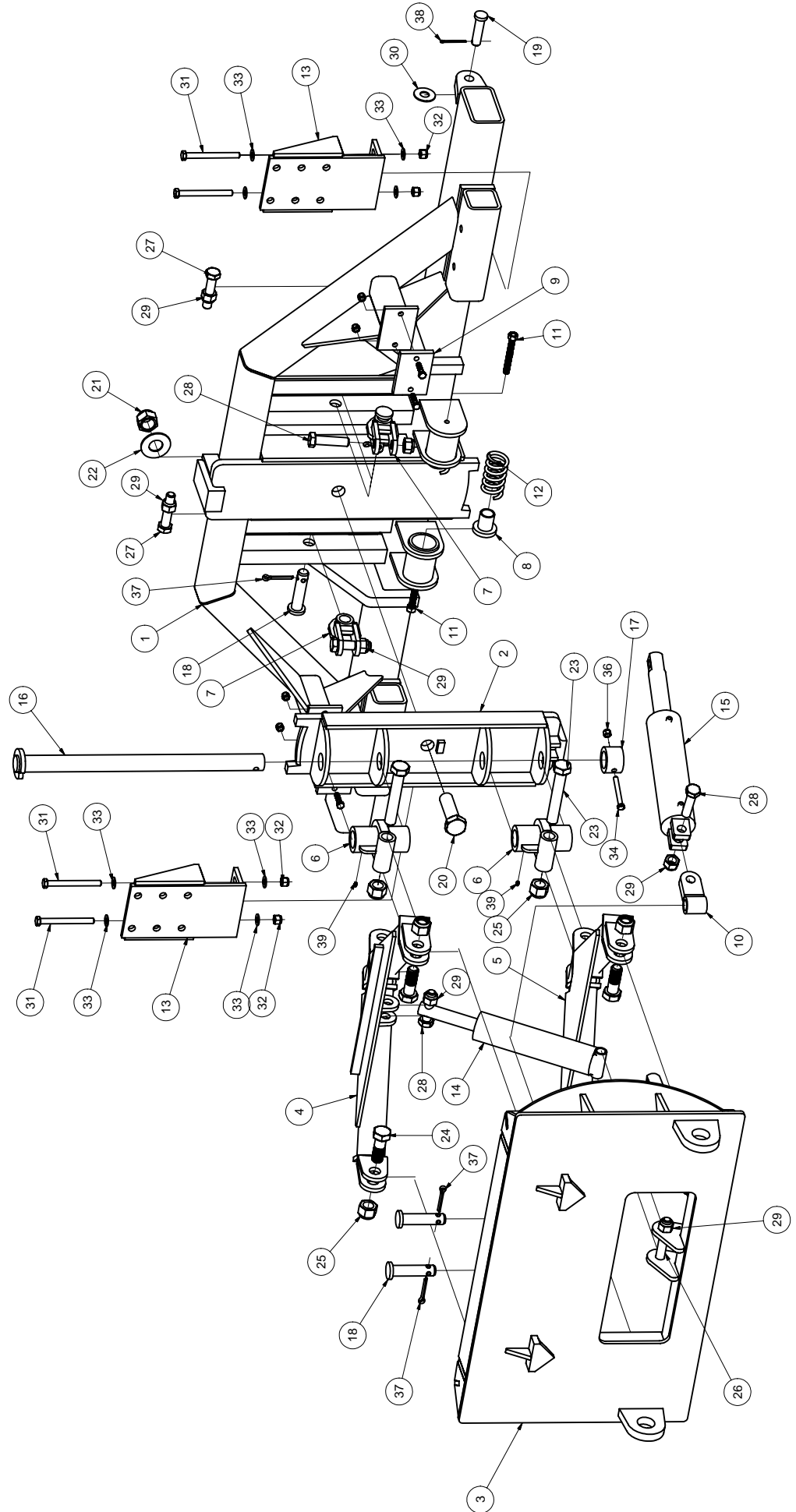
TABLE OF CONTENTS

<u>DESCRIPTION</u>	<u>PAGE NUMBER</u>
Warranty	2-5
MW J-Plow Parallel lift Hitch Assy.	8-9
14' MW J-Plow Assy.	10-11



22956 HWY 61 MORLEY, MO 63767 (573)262-3545 PH (573)262-3369 FX

MW J-PLOW PARALLEL LIFT HITCH ASSEMBLY PART #20301028



EQUIPMENT MAY NOT BE EXACTLY AS SHOWN. SOME COMPONENTS MAY BE OPTIONAL.
TO MAINTAIN OUR ON-GOING PRODUCT AND DEVELOPMENT IMPROVEMENT PROGRAM, VIKING-GIVENS RESERVES THE RIGHT TO CHANGE EQUIPMENT & SPECIFICATION WITHOUT NOTICE.



22956 Highway 61 Morley, MO 63767 Phone: (573) 262-3545 Fax: (573) 262-3369

MW J-Plow Parallel Lift Hitch Assembly
Part# 20301028

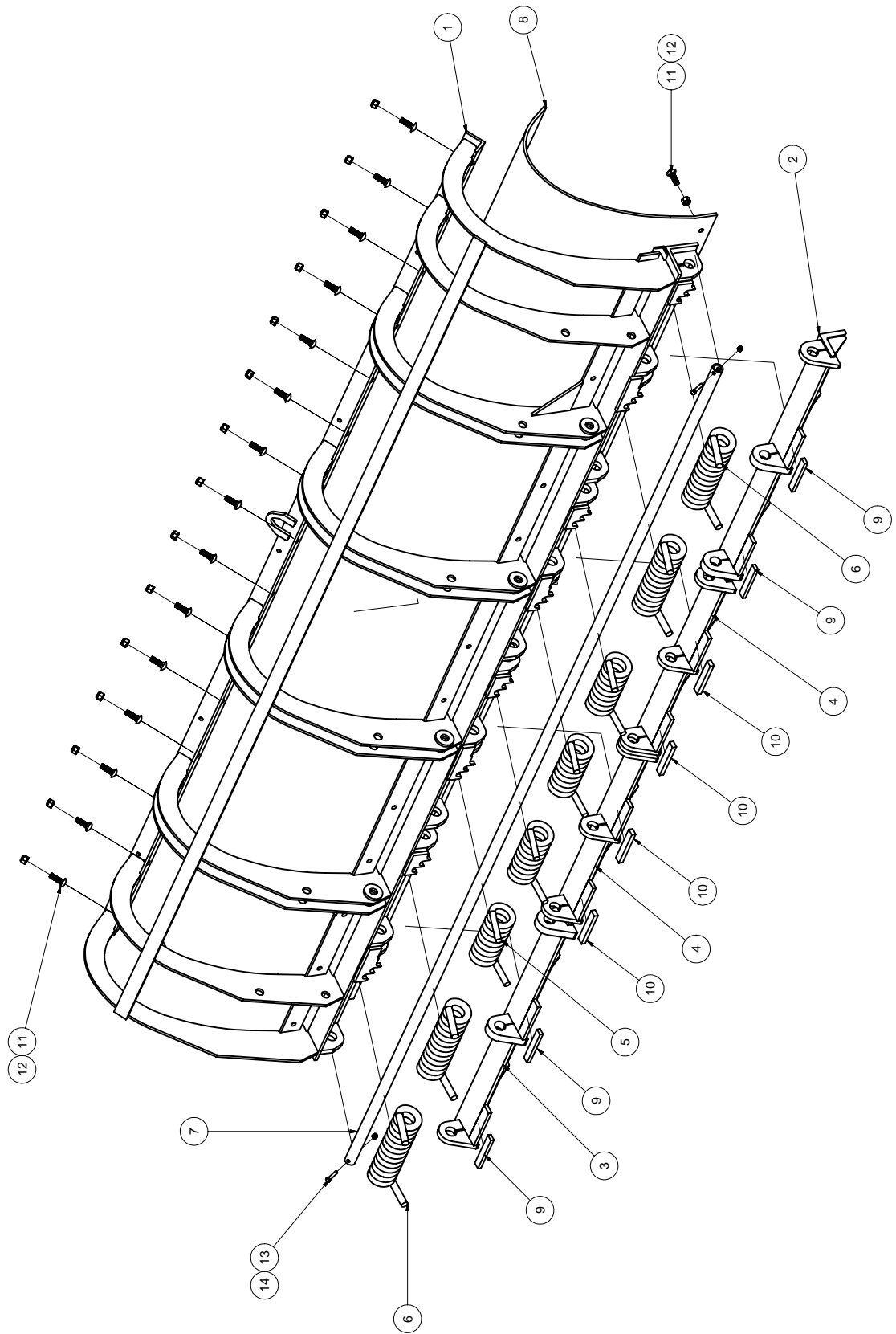
Item	Drawing No.	Alt. Item No.	Description	Qty.
1	11103399		PF Parallel lift weld't J-plow	1
2	11103244		Pivot swivel weld't parallel lift	1
3	10103092		A-frame weld't parallel lift	1
4	11103247		Upper lift arm weld't	1
5	11103246		Lower lift arm weld't	1
6	11103245		Pivot lift trunnion weld't	2
7	11103248		Pivot block clevis type	2
8	11103242		Plunger weld't spring housing	2
9	11110048		Stop parallel lift	2
10	11203022		Pivot block 1 1/16 hole	2
11	11103274		Spring tension ADJ bolt weld't	2
12	180392		Spring compression 2 5/8 x 5 1/4	2
13	11103090		MTG Brkt weld't outer tube parallel lift	2
14	180138Z		Cylinder 3 x 9 7/8 DA poly seal	1
15	180137Z		Cylinder 3 1/2 x 11 5/8 DA poly seal	2
16	10903063		Pin pivot 1 15/16 x 28 1/16 UH to CH	1
17	10929003		Pin collar TR 3 x 2 x 2	1
18	10908001		Pin 1 1/4 x 4 3/8 UH to CH	4
19	10903065		Pin 1 x 3 1/2 UH to CH	4
20	HW40A-2146	81023C	Bolt hex 1 1/2 x 5 unc zinc	1
21	237286	80999D	Nut hex toplock 1 1/2" unc zinc	1
22	3SK3860		Flatwasher USS 1 1/2 zinc	1
23	HW40A-2060	81016A	Bolt hex 1 1/4 x 7 1/2 unc zinc	2
24	HW40A-2030	81023F	Bolt hex 1 1/4 x 3 1/2 unc zinc	4
25	HW30E-20	80999D	Nut hex toplock 1 1/4 unc zinc	6
26	HW40A-1648		Bolt hex 1 x 6 unc zinc	1
27	HW40A-1636	81022	Bolt hex 1 x 4 1/2 unc zinc	2
28	HW40A-1632	81022	Bolt hex 1 x 4 unc zinc	5
29	HW30E-16		Nut hex toplock 1" unc zinc	8
30	281013A	81013A	Flatwasher USS 1" zinc	4
31	HW40A-1052		Bolt hex 5/8 x 6 1/2 unc zinc	4
32	HW30E-10		Nut hex toplock 5/8" unc zinc	4
33	233819	81070A	Flatwasher sae 5/8 zinc	8
34	HW40A-0832		Bolt hex 1/2 x 4 unc zinc	1
35	3SK3610	81083	Bolt hex 1/2 x 2 unc zinc	4
36	HW30E-08		Nut hex toplock 1/2" unc zinc	5
37	HW13A-1244		Cotter pin 3/8 x 2 1/2 zinc	4
38	280507	80508A	Cotter pin 1/4 x 2 1/2 zinc	4
39	280577	80577D/80579	Grease fitting 1/8 28 STR	2



22956 HWY 61 MORLEY, MO 63767 (573)262-3545 PH (573)262-3369 FX

14 FT MW J-PLOW ASSEMBLY

PART # 22101003



EQUIPMENT MAY NOT BE EXACTLY AS SHOWN. SOME COMPONENTS MAY BE OPTIONAL.
TO MAINTAIN OUR ON-GOING PRODUCT AND DEVELOPMENT IMPROVEMENT PROGRAM, VIKING-GIVES RESERVES THE RIGHT TO CHANGE EQUIPMENT & SPECIFICATION WITHOUT NOTICE.



22956 Highway 61 Morley, MO 63767 Phone: (573) 262-3545 Fax: (573) 262-3369

14' MW J-Plow Assembly
Part# 22101003

Item	Drawing No.	Alt. Item No.	Description	Qty.
1	22103007		J-Plow Moldboard Weld't 14'	1
2	22103008		Base angle trip edge weld't 4' section RTH	1
3	22103009		Base angle trip edge weld't 4' section LTH	1
4	22103010		Base angle trip edge weld't 3' section	2
5	280416		MW small trip edge spring torsion	4
6	280421		MW large trip edge spring torsion	4
7	22129001		Spring retainer tube 14' J-Plow	1
8	22130000		Moldboard skin poly 3914TE-HDP	1
9	10410043		FH 1/2 x 1 x 6	4
10	HW30E-06	81086C	Nut hex toplock 3/8 unc zinc	2
11	HW40A-0616		Bolt hex 3/8 x 2 unc zinc	2
12	221834		Bolt carriage 5/8 x 2 unc zinc	30
13	HW30E-10		Nut hex toplock 5/8" unc zinc	30
14	22110000		FH 5/8 x 1 x 6	4